



# Zombies vs. Humans!

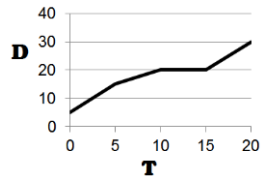
Directions: Answer the questions below and show your work. Good luck big brainz!!!!

1. You notice a human 15 meters away walking towards you. How long should you wait to jump out and attack, if they are walking at a rate of 3 m/s?

\_\_\_\_\_

2. When is the best time to attack the human moving according to the motion graph?

\_\_\_\_\_

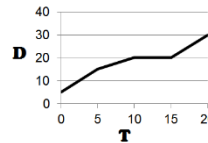


3. A human is walking away from you at 2.5 m/s. You are currently shambling towards them at 1.2 m/s. What must your acceleration be to match their speed in 12 seconds?

\_\_\_\_\_

4. How fast is the human moving from 15s to 20s?

\_\_\_\_\_



5. You're stuck on top of a car trying to get at the humans inside. They drive 15 m in 2 s, stop for 3 s, then drive another 20 m in 4 seconds. What was their average velocity? \_\_\_\_\_

6. A zombie is following close behind you! You spot a house you could barricade 400m ahead. You've been running at 5 m/s. How soon will you reach the house if you keep your current pace?

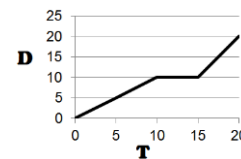
\_\_\_\_\_

7. There is a group of zombies heading towards you! You are currently walking at 2.5 m/s. Your top running speed is 6 m/s. How quickly must you accelerate to reach your top speed in 3 seconds?

\_\_\_\_\_

8. How fast is the zombie moving during the first 10 seconds?

\_\_\_\_\_



9. There is a zombie on your car! If you were stopped for 2 seconds, then drove 50 m in 5 s, and then sped for 96 m in 6s, what was your average velocity? \_\_\_\_\_

\_\_\_\_\_